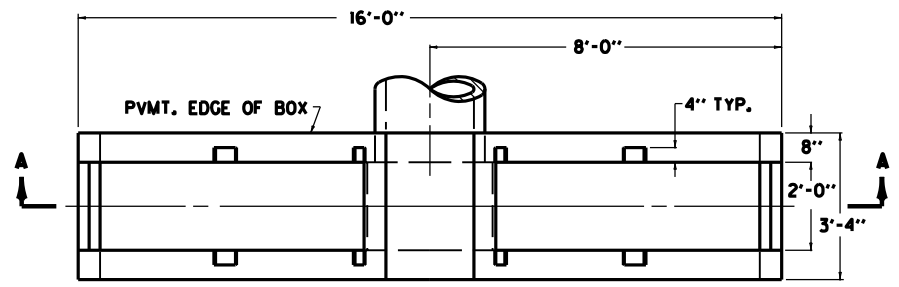
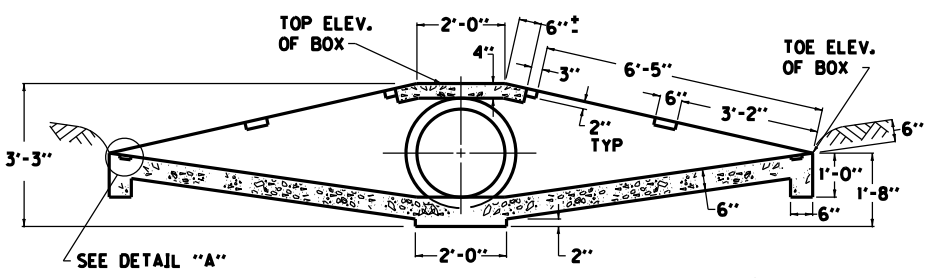


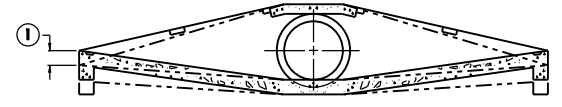
COUNTY OF	ITEM NO.	SHEET NO.



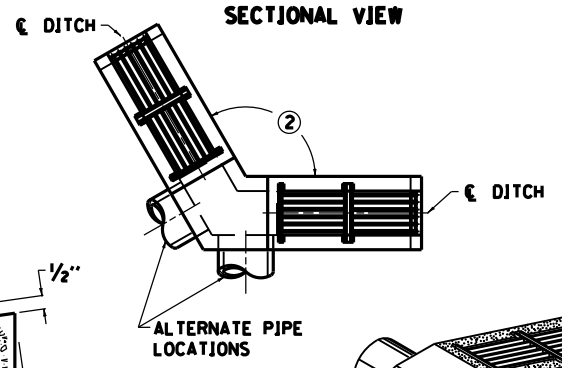
PLAN VIEW



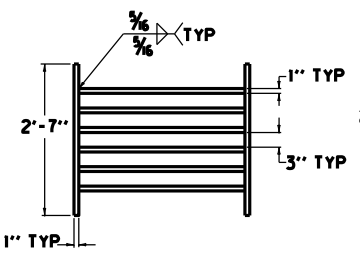
SECTION A-A



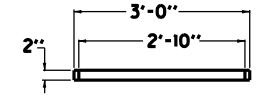
SECTIONAL VIEW



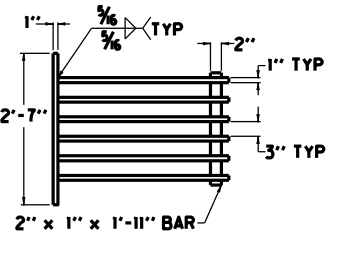
ALTERNATE PIPE LOCATIONS



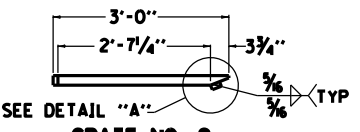
GRATE NO. 1 PLAN VIEW



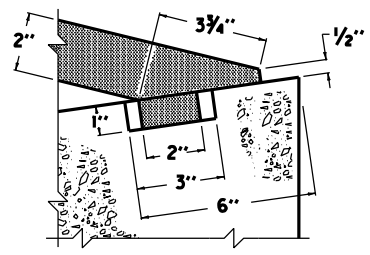
GRATE NO. 1 SIDE ELEVATION



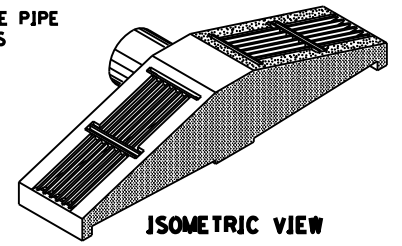
GRATE NO. 2 PLAN VIEW



GRATE NO. 2 SIDE ELEVATION



DETAIL "A"



ISOMETRIC VIEW

NOTES

- ITEM CODE BID ITEM UNIT
 1728 SAFETY BOX INLET-18 IN DBL SDB-5 EACH
 1729 SAFETY BOX INLET-24 IN DBL SDB-5 EACH
- THE UNIT BID FOR EACH STRUCTURE SHALL INCLUDE ALL CONCRETE, STRUCTURAL STEEL GRATING, EXCAVATION, LABOR AND INCIDENTALS NECESSARY FOR ITS CONSTRUCTION AS DETAILED ON THIS SHEET.
- TOE OF BOX SHALL BE RAISED OR LOWERED TO FIT EXISTING FIELD CONDITIONS.
 - ANGLE BETWEEN BOX WALLS MAY VARY TO FIT EXISTING FIELD CONDITIONS.

APPROXIMATE QUANTITIES			
CLASS "A" CONC.	GRATE	LBS. STRUCTURAL STEEL	
CUBIC YARDS	NUMBER	EACH GRATE	TOTAL POUNDS
2.07	1	145	596
	2	153	

N/A

DBL SAFETY BOX INLET DETAIL SHEET

FILE NAME: C:\USERS\PATRICK.STONE\APPDATA\LOCAL\TEMPORARY\INTERNET\FILES\CONTENT\OUTLOOK\MSWMSAFETY_BOX.DWG
 USER: PATRICK.STONE
 DATE PLOTTED: September 24, 2013
 MicroStation v8.11.7.413 E-SHEET NAME: